



Product Guide Contents

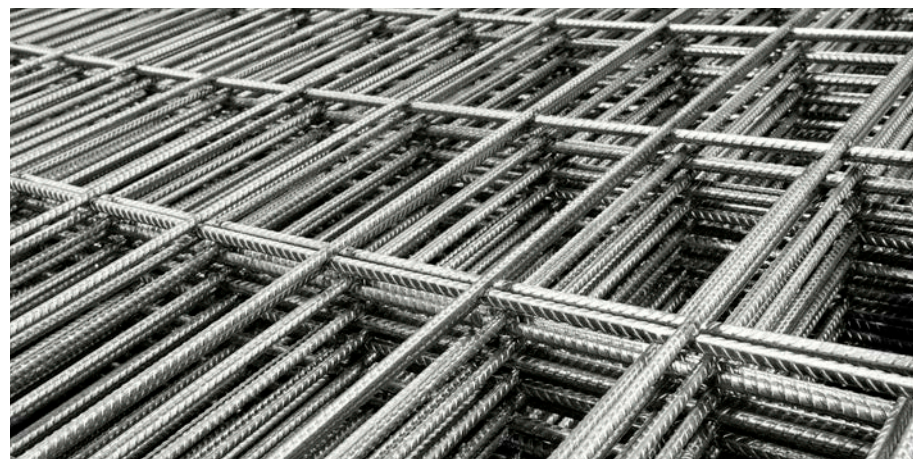
Our Story	4
Our Values	6
Business Partners	6
Reinforcing Bar Fabrication	6
Quality and Customer Service	6
Safety and Sustainability	6
Technology and Automation	7
Product availability, delivery details and noncompliance	10
Services	12
Scheduling	12
Estimating	12
BIM Services	13
Bar Processing	14
POD Slab Packages	14
Mesh Processing & Special Mesh	15
Prefabricated Reinforcing Steel	15
Saw Cutting	16
Galvanising	16
Threading	16
Delivery	17
Reinforcing Bar	18
Round Bar - R250N	18
Deformed Bar - GD250N	19
Deformed Bar - D500N	19
Deformed Bar - D750N	19
Corner Bars	21
Starter Bars	21
Galvanised Deformed Bar - D500N	21

Mesh	23
Square Mesh	23
Ezimesh	23
Rectangular Mesh	24
Trench Mesh	25
Accessories	26
Bar Chairs/Spacers	26
Wire Bar Chairs	26
Bar Chair Bases	27
Slab on Ground Chairs Combination	28
Plastic Bar Chairs	28
Plastic Mesh Chairs	29
Circular Plastic Chairs	29
Plastic Deck Chairs - Bottom Layer	29
Plastic Deck Chairs - Top Layer	30
Plastic Deck Chair Bases	30
Plastic Panel Chairs	30
Trenchmesh Supports	30
Concrete Bar Chairs	30
Tie Wire	31
Bag Ties	31
Belt Packs	31
Straight Cut Tie Wire	31
Trenchmesh Fitments	32
Ligatures	32
Z Bars	33
Z Cages	33
Dowel Bars & Accessories	34
Round Black (with sawn ends)	34
Round Galvanized (with sawn ends)	34
Square Black (with sawn ends)	34
Square Galvanized (with sawn ends)	34
Diamond Dowels Black	35
Diamond Dowels Galvanized	35
Dowel Cradles	35
Threaded Dowels	35
Dowel Caps	35
Dowelmaster	36
Uni Dowel Sleeve Round	36
Uni Dowel Sleeve Square	36
Speed Sleeves	36
Polythene Film	37
Duct Tape	37
Joint Filler & Joint Formers	38
Foam Filler with Adhesive	38
Rigid Filler Bitumen Impregnated	38

Crack Inducers	39
Expansion Joint	39
Key Joint	39
Key Joint Capping	39
Safety Caps	40
Bar Guards	40
Reo Soks	40
Couplers	41
BT Couplers	41
BT Threading	41
Lenton Couplers	42
Lenton Terminators	42
Lenton Position Couplers	42
Lenton Thread	43
Structural Decking	43
Reflor	43
Kingflor	43
Galvanised Industrial Weldmesh	44
Void Formers - Pods	45

Non standard charges	46
-----------------------------	-----------





Our story

Established in 1994, Wire Industries has grown to become one of Australia's leading suppliers of reinforcing steel products and services. Our focus has always been to build client relationships through consistently supplying the highest quality products and the best customer service.

Wire Industries is a medium-sized, Australian owned and operated business, and our strength lies in our ability to provide a diverse range of products. We pride ourselves in supplying anything you'll need for a wide range projects, such as residential driveways, high rise buildings, bridges and other large civil engineering projects.

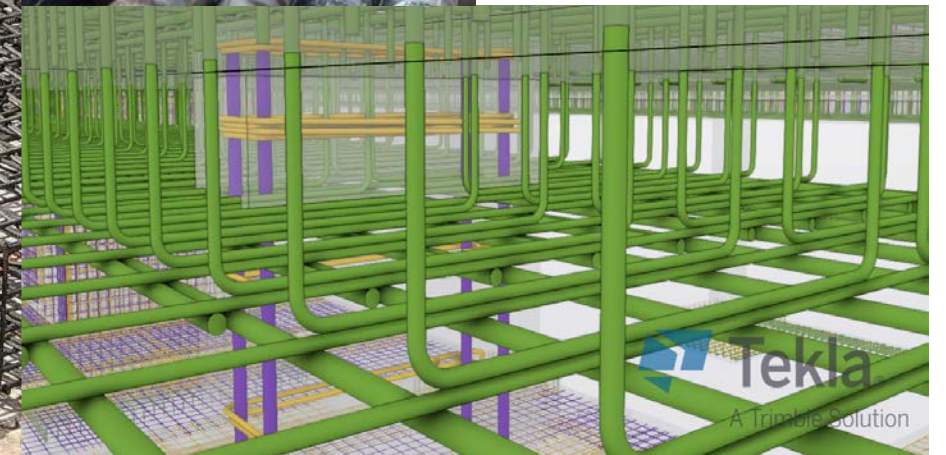
While reinforcing bar and mesh remain our core product offering, we also provide fabrication services for cages and components along with a full range of concreting accessories and building products. These products are complemented with full service from quoting, scheduling and processing through to tagging and delivery with bar marking plans for placement.

“Our focus has always been to build client relationships through consistently supplying the highest quality products and the best customer service.”



What We Do

- **Listen** and understand your requirements
- **Estimate** the cost for your project
- **Manage** and help kick-start your project
- **Schedule** the fine details for bar and mesh for your project
- **Cut and bend** your reinforcement bar to specifications
- **Prefabrication** for your project
- **Deliver your goods** to your site – on time and safely



Our values

Business partners

At Wire Industries, we value all our customers, suppliers, contractors and our employees as an integral part of our business. In fact, relationships are our business.

Quality and Customer Service

We are committed to providing the best reinforcing products and exceptional customer service. Wire Industries products are manufactured using only the highest quality materials and processes. Steel reinforcing products are made to the Australian Standard AS/NZS 4671:2019, and our operations are stringently reviewed and monitored in accordance with Australian/New Zealand Standard AS/NZS ISO9001:2015.

Safety and Sustainability

The principles of sustainability and importance of safety are foundations on which we've built our business. It is crucial for us to provide a safe environment for our business partners and staff. We also recognise our responsibility in minimising the environmental impact of our manufacturing operations, and ensure compliance with all applicable environmental laws and regulations. We aim to continually improve processes to make Wire Industries the most efficient and compliant business in the use of materials and resources.

Technology and Automation

Our ability to adopt the industry's latest technology and automation is another way in which we strive to bring extra value to our business and our customers.



Wire Industries is proud to be a member of The Steel Reinforcement Institute of Australia (SRIA). The SRIA is a national non-profit organisation providing high quality technical support and information services to the Australian building industry.

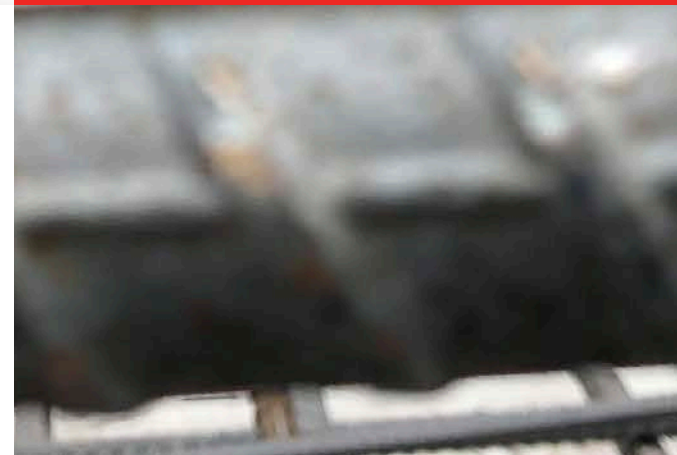


Our customers can rest assured knowing Wire Industries reinforced steel products are independently certified by Australian Certification Authority for Reinforcing Steel (ACRS) - Australia's leading third-party quality assurance authority.



We use the highest quality, locally produced, environmentally friendly reinforcement raw steel material from Australian steel mills. Each steel mill Wire Industries partners with is ACRS certified. We also only employ skilled Australian workers to manufacture our products at our various branches around Australia.

Next Generation Reinforcing Solutions



Wire Industries adopts world leading automatic machines for reinforcing steel processing, proven-technology for production of resistant-welded reinforcing mesh and industry specialized German software technology for our bar scheduling which is fully integrated with our production facilities to provide 100% traceability from raw material to every bar on job site.





Product availability, delivery details & noncompliance



Product Availability

Please note: some products are not stocked at all locations. Please confirm availability with our sales personnel at your particular location.

Pick-up

You can pre-order your goods, and pick it up, at our various locations, Monday-Friday between 6:30am - 4:30pm.

Delivery Lead Times

1. **Stock Items:** Subject to availability, orders placed by 1:00 pm can generally be delivered the next working day.
2. **Scheduled Items:** Final drawings and project requirements are required ten (10) working days prior to the delivery date.
3. **For continuing projects:** a delivery program providing at least ten (10) working days' notice is needed to ensure deliveries meet your project's reinforcement requirements.
4. Delays in excess of a reasonable time for unloading may incur an addition charge. Where goods are returned to our factory, the additional cost for this service will be added to the delivery fee.

Standard delivery

Goods are delivered on truck alongside your site on a formed roadway.

Please note: unloading is the client's responsibility. Where prior arrangements have been made for Wire Industries to unload with a truck-mounted crane, goods will only be placed on the ground adjacent to the truck. Clients accept full responsibility where delivery vehicles are requested to enter site and will only be undertaken at the driver's discretion.

Metropolitan Delivery Charge:

- \$250 per drop for standard reinforcements
- \$500 per drop for fabricated cages

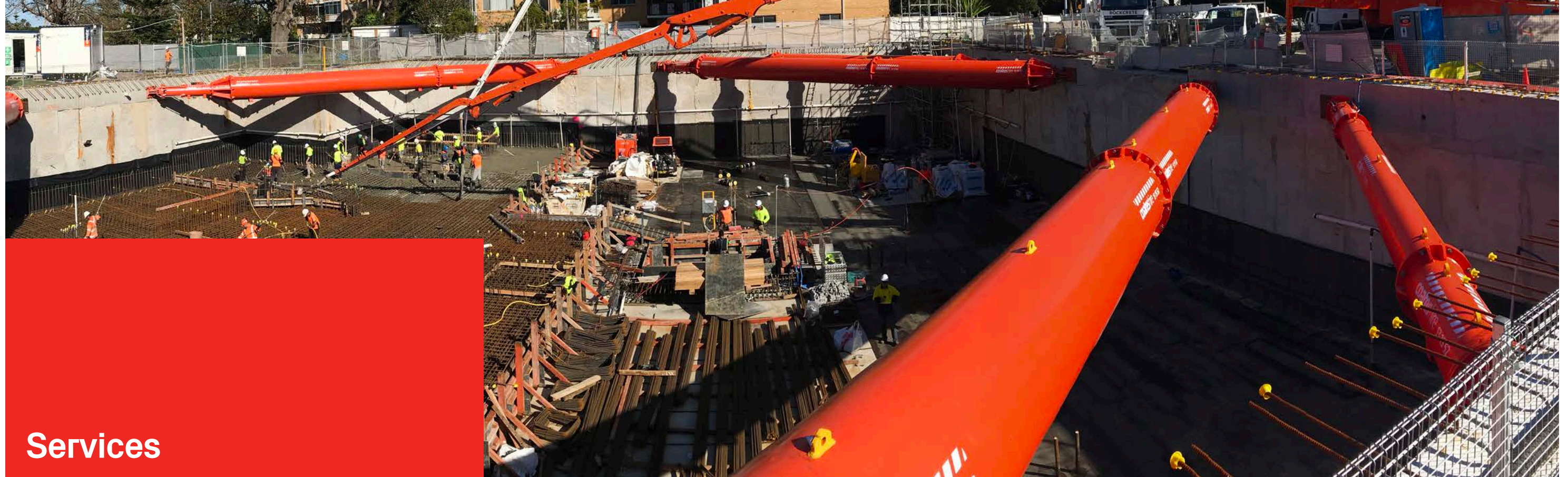
Noncompliance

In the first instance, notice of any noncompliant material should be reported to your Wire Industries contact as soon as possible, noting the Schedule Number and Bar Mark.

Where materials are found to be noncompliant, Wire Industries will (at its own discretion), repair or replace the goods within 24 hours of notification.

Any disputes regarding noncompliant goods are to be resolved prior to use. Any claims relating to noncompliant materials are to be advised to Wire Industries in writing within 48 hours of delivery.





Services

Scheduling

Wire Industries expert schedulers can prepare detailed material lists and marking plans from your architectural/engineering drawings, contractor's details and site information. Our sophisticated industry-specific software package provides clear documentation for material supplied, and assists in the management of a project's deliveries. Our marking plan will provide details of reinforcement location(s) to assist the placement on site.

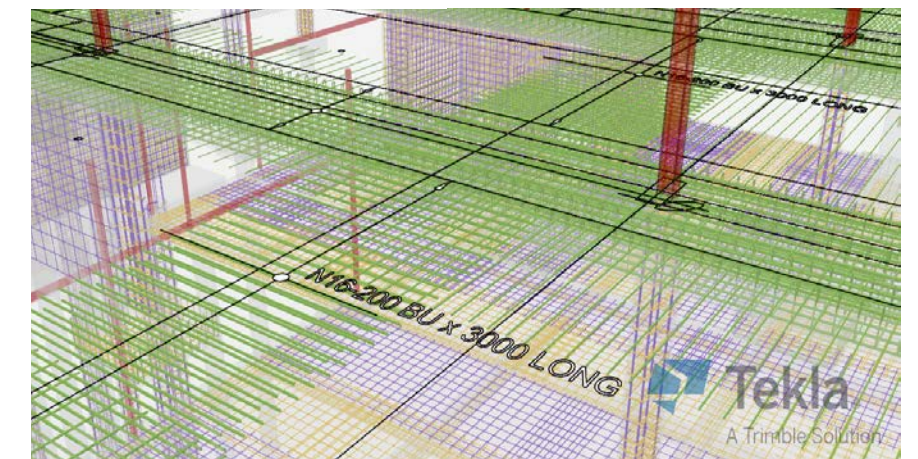
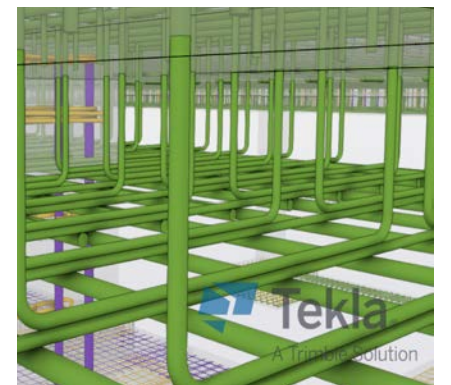
Estimating

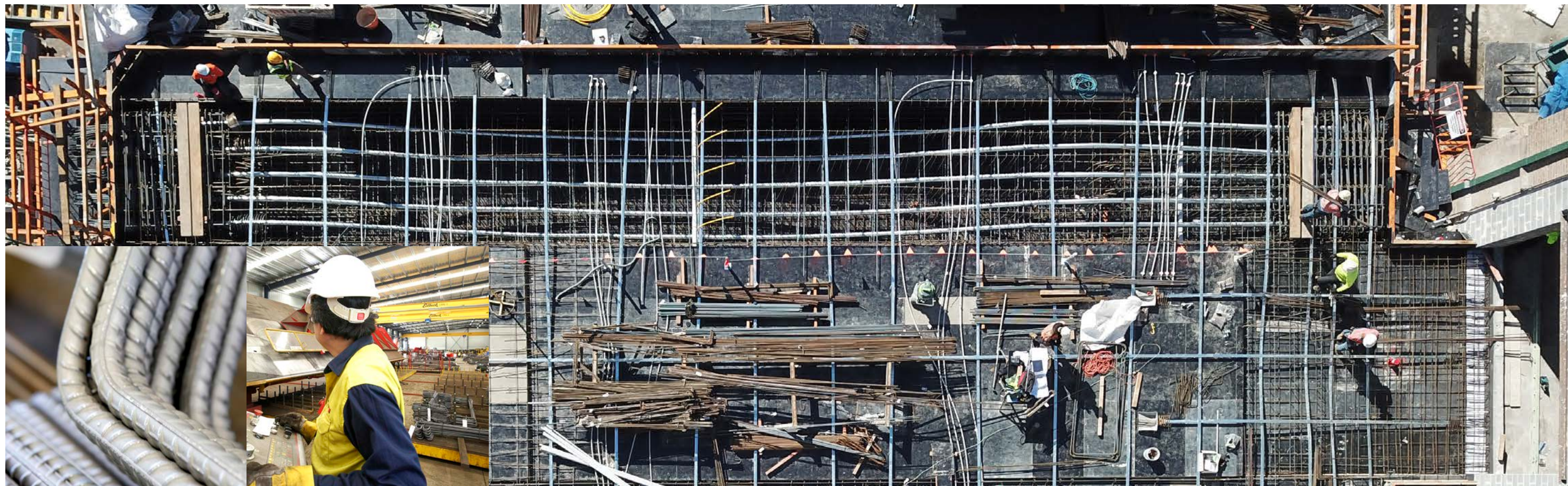
Wire Industries can assist you in costing your project as we can provide an estimate of the amount of reinforcement product required. Our experienced schedulers will be able to prepare a take-off based on the information and drawings you provide.



Building Information Model (BIM) Service

Wire Industries can provide 3-D modelling and a Building Information Model (BIM) service for your job. For highly complicated reinforcing steel structures, our expert staff can build a BIM model for you, which can help you identify potential steel conflict and/or congestion problems early to help avoid costly delays on site.



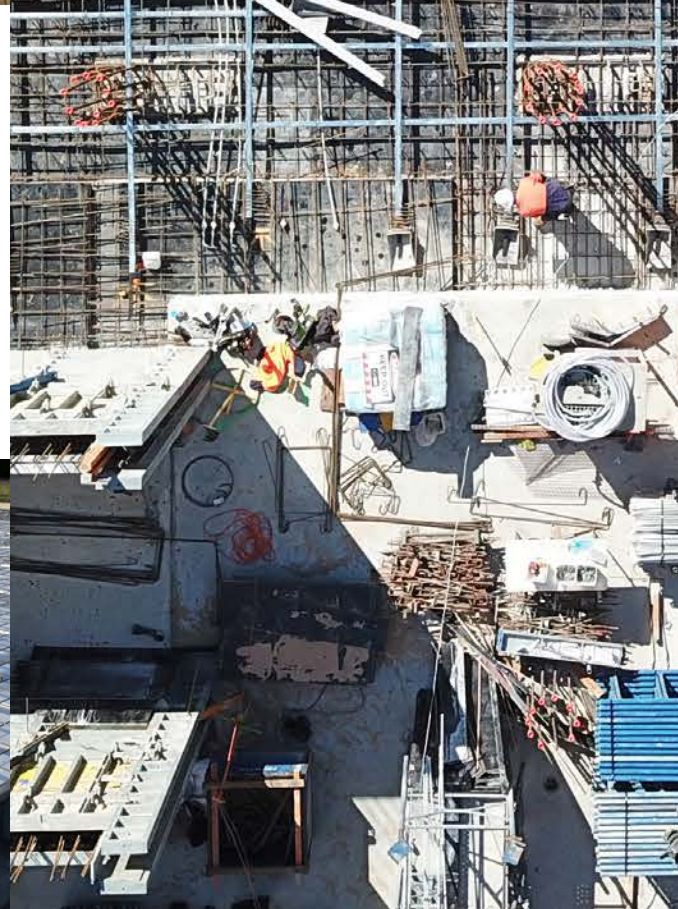
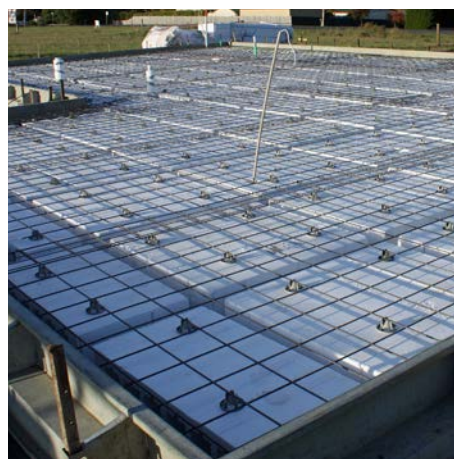


Bar Processing

All our reinforcing products are produced to the current Australian Standards AS4671, AS3600. Processing (cutting, bending, bundling and tagging) of scheduled steel is performed using the latest in industry equipment. Three-dimensional bending and other complex reinforcement bending of anti-burst spirals, top hats, circular rings and radius bars are all additional services that Wire Industries can provide. Each completed bundle is tagged, tracked and assembled in one location prior to delivery.

POD Slab Packages

Wire Industries can provide POD Slab Packages for residential house slabs. We do the take-off and then source the best POD, steel and accessories for you to complete the project. *Remnants of POD material will be collected.



Mesh Processing & Special Mesh

Wire Industries is able to provide special engineering mesh, with nominated wire size and dimensions, tailored to your specifications. Furthermore, we have the capacity to provide cut and/or bent services for the mesh to meet the specific needs of any project. All cutting and bending of reinforcing mesh is performed to relevant Australian Standards, and this service can assist you when working with difficult profiles of concrete slabs.

Prefabricated Reinforcing Steel

We can provide Prefabricated Reinforcing Steel for various requirement, including pier, pile, column, and footing reinforcement to help speed up construction on your site. Our expert welders and specialised cage machine can tack weld reinforcement steel at our factory to minimise your steel fixers work at your job site.



Saw Cutting

Primarily used for dowels, Saw Cutting can also be provided in other circumstances. All reinforcement steel is 'crop cut' as standard; however, Wire Industries can provide an additional service of saw cutting reinforcing bar if needed.

Galvanising

We can provide galvanising services for all of our reinforcing steel products. Wire Industries has partnered with expert industry galvanisers, and we guarantee compliance to relevant Australian Standards. Where required as an additional process, adequate time is required when placing orders.

Threading

Wire Industries provides bar threading service for all diameters of reinforcing bar. Our specialized threading machines create high precision threading for various brands of couplers or can be designed to meet your specific requirements. A range of threaded starter bars are also available.



Delivery

Wire Industries offers transport solutions to suit a variety of situations. Goods are transferred from our storage location to the delivery vehicle, and order completeness is verified by computer tracking.

We have a range of delivery options available to our customers. Our fleet consists of semi-trailers, long tom, and a variety of rigid body tray trucks. Most of our trucks have Hiab cranes installed in order to assist with the unloading of materials at your site.

Special transportation assistance is available outside standard hours of delivery for pre-slung loads, oversize loads, and transflats upon request.

All of our delivery vehicles are equipped with fall-safe rails, and our drivers have been trained to follow all safety regulations to comply with your site safety requirement.

Please note: unloading is the client's responsibility. Where arrangements have been made to unload with a truck mounted crane, goods will only be placed on the ground adjacent to the truck. Clients accept full responsibility where delivery vehicles are requested to enter their site and will only be undertaken at the driver's discretion.

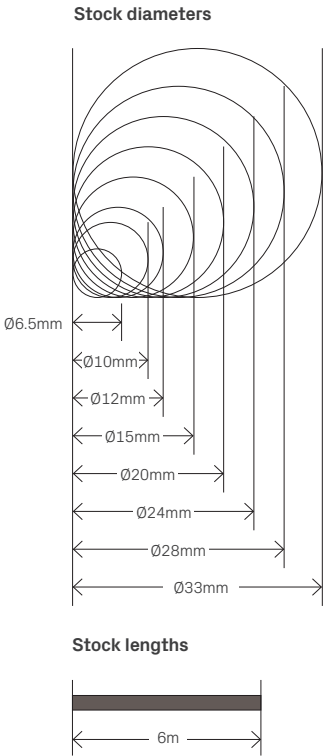


Round Reinforcing Bar



Round Reinforcing Bar (R250N) is commonly used to manufacture ligatures used to separate top and bottom layers of mesh in concrete slabs, or as dowel bars for joining concrete sections in pavement.

Wire Industries carries a supply of stock Round Reinforcing Bar in 6 metre lengths with a range of diameters from 6.5mm to 33mm.

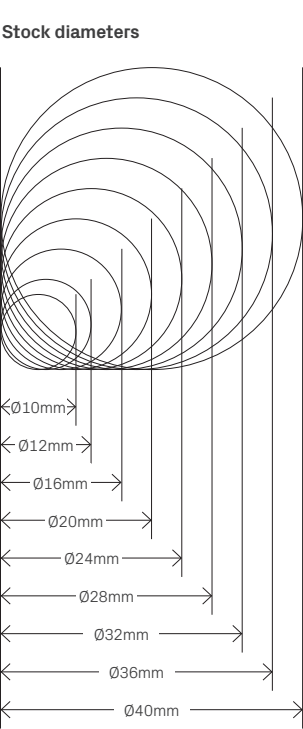


Product Code	Ø Diameter (mm)	Cross Sectional Area (mm²)	Stock Length (m)
Round Bar - Grade R250N			
R6.5	6.5	33	6
R10	10	79	6
R12	12	113	6
R16	16	201	6
R20	20	314	6
R24	24	452	6
R28	28	573	6
R33	33	855	6

Deformed Reinforcing Bar



Deformed Reinforcing Bar is used to increase tensile strength in various concrete applications. Our ACRS certified deformed reinforcing bar is available in a range of grades, stock lengths and diameters.



Product Code	Ø Diameter (mm)	Cross Sectional Area (mm²)	Stock Length (m)
Deformed Bar - Grade D250N			
S12	12	113	6, 9
Deformed Bar - Grade D500N			
N10	10	79	6
N12	12	113	6, 12
N16	16	201	6, 12
N20	20	214	6, 12, 15
N24	24	452	6, 12, 15
N28	28	616	12, 15
N32	32	802	12, 15
N36	36	1020	12, 15
N40	40	1260	15

Deformed Bar - Grade D750N			
V10	10	79	N/A
V12	12	113	N/A
V16	16	201	N/A

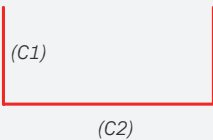
Processed Reinforcing Bar

Reinforcing Bar complies with AS/NZS 4671:2019 and is available in a range of diameters from 12mm to 20mm. We offer a complete supply service from receipt of your project's construction drawings through to supply to site of tailor made bar cut, bent, bundled and labelled with schedules and marking plan for placing. Processing is quality assured by ACRS - Australia's leading quality assurer.

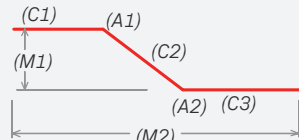


Examples of common shapes available

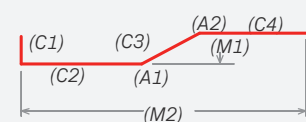
Example 1: Shape code 2104



Example 2: Shape code 2109



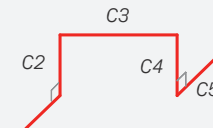
Example 3: Shape code 3106



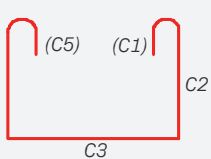
Example 4: Shape code 3202



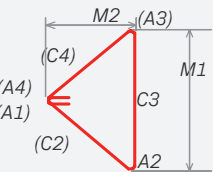
Example 5: Shape code 4103



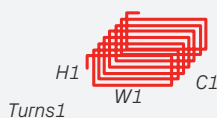
Example 6: Shape code 4101



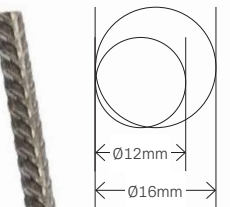
Example 7: Shape code 4179



Example 8: Shape code 9998

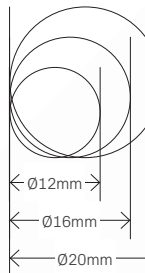


[a] Corner Bar stock diameters



[b]

Starter Bar stock diameters



Starter Bars are processed bars which are normally used to tie concrete walls to slabs or footings. Starter bars are usually made to tie reinforced masonry or concrete walls to slabs or footings, as designed by the engineer. They can be cut and bent to shape from standard deformed reinforcing bar.

Corner Bars are used to tie together two elements of a structure that are at right angles to each other, such as walls, slabs or beams. These can be cut and bent to shape from standard deformed reinforcing bar. Common shapes are available in stock. slabs or footings, as designed by the engineer.

Product Code	Ø Diameter (mm)	UOM	Bundle size	Bundle Weight (KG)
--------------	-----------------	-----	-------------	--------------------

Corner Bars [a]

RBBN12020100	N12 L Bar 200mm x 1000mm	EACH	10	10.92
RBBN12050050	N12 L Bar 500mm x 500mm	EACH	10	9.10
RBBN12060060	N12 L Bar 600mm x 600mm	EACH	10	10.92
RBBN16020100	N16 L Bar 200mm x 1000mm	EACH	10	19.42
RBBN16020120	N16 L Bar 200mm x 1200mm	EACH	10	22.65
RBBN16060060	N16 L Bar 600mm x 600mm	EACH	10	19.42

Starter Bars [b]

RBCN12030	N12 Straight Bar 300mm	EACH	10	2.73
RBCN12040	N12 Straight Bar 400mm	EACH	10	3.64
RBCN12060	N12 Straight Bar 600mm	EACH	10	5.46
RBCN12100	N12 Straight Bar 1000mm	EACH	10	9.10
RBCN16060	N16 Straight Bar 600mm	EACH	10	9.71
RBCN16120	N16 Straight Bar 1200mm	EACH	10	19.42
RBCN16200	N16 Straight Bar 2000mm	EACH	10	32.36
RBCN20060	N20 Straight Bar 600mm	EACH	10	15.17
RBCN20100	N20 Straight Bar 1000mm	EACH	10	25.28

Galvanized Deformed Bar



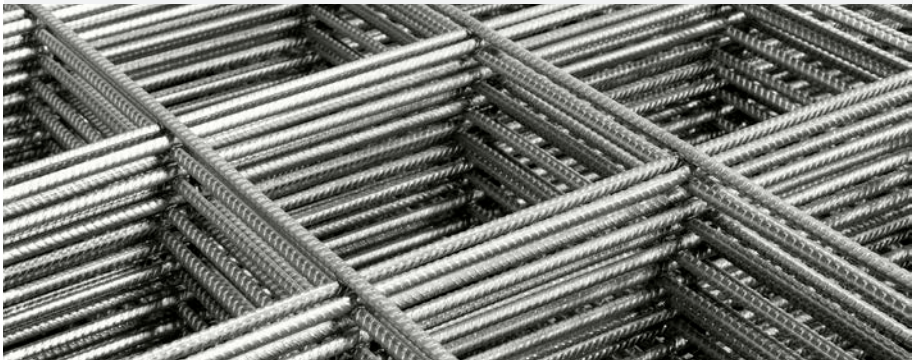
Product Code	Ø Diameter (mm)	Cross Sectional Area (mm²)	Stock Length (m)
Galvanised Deformed Bar - Grade D500N			
N12 gal	12	113	6
N16 gal	16	201	6
N20 gal	20	214	6
N24 gal	24	452	6

Square Rib Mesh & Ezimesh

Our Square Rib Mesh and Ezimesh is manufactured from L-grade ribbed wires (D500L) in compliance with AS/NZS4671:2019 and quality assured by ACRS. Ribbed wires are resistance-welded together with equal spacing in both directions to form square apertures.

Product Code	Description	UOM	Main wire (mm)	Cross wire (mm)	Edgewire (mm)	Weight/ sheet (kg)	Bundle QTY
Square Mesh - Standard sheet size 6.0m x 2.4m							
FR062S	Rib Fabric SL62 Std Sheet	SHT	6.00@200	6.00@200	4.75@100	31.74	50
FR072S	Rib Fabric SL72 Std Sheet	SHT	6.75@200	6.75@200	4.75@100	40.50	40
FR082S	Rib Fabric SL82 Std Sheet	SHT	7.60@200	7.60@200	5.37@100	52.44	30
FR092S	Rib Fabric SL92 Std Sheet	SHT	8.60@200	8.60@200	6.00@100	64.85	20
FR102S	Rib Fabric SL102 Std Sheet	SHT	9.50@200	9.50@200	6.75@100	80.35	20
FR081S	Rib Fabric SL81 Std Sheet	SHT	7.60@100	7.60@100	7.60@100	104.91	20

Product Code	Description	UOM	Main wire (mm)	Cross wire (mm)	Weight/ sheet (kg)	Bundle QTY
Ezimesh - Sheet size 4.0m x 2.0m						
FR062E	Rib Fabric SL62 Ezi 2m x 4m	SHT	6.00@200	6.00@200	18.44	50
FR072E	Rib Fabric SL72 Ezi 2m x 4m	SHT	6.75@200	6.75@200	22.68	50
FR082E	Rib Fabric SL82 Ezi 2m x 4m	SHT	7.60@200	7.60@200	30.00	40



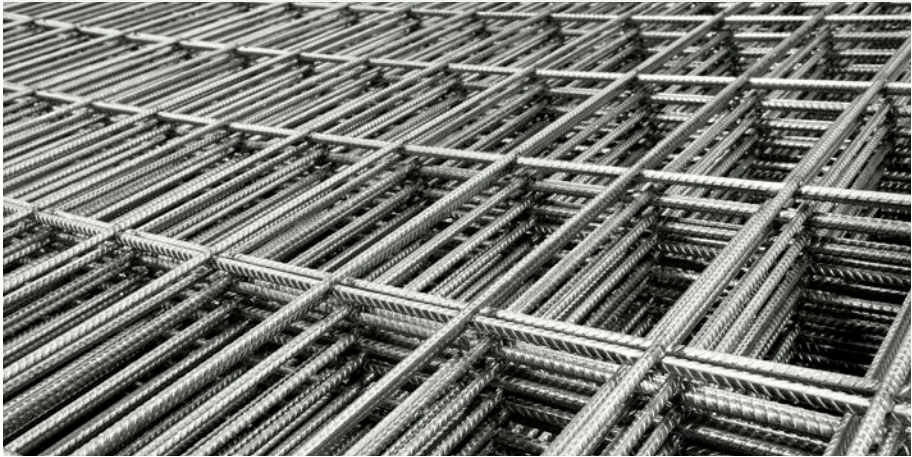
Square Rib Mesh is a general purpose mesh for reinforcing flat concrete, mostly used in walls, precast panels, factory floor, external pavement, house slabs, driveway, patios and is stocked in two standard sizes: 6m x 2.4m and 3m x 2.4m.

Rectangular Mesh

Our Rectangular Rib Mesh is manufactured from L-grade ribbed wires (D500L) in compliance with AS/NZS4671:2019 and quality assured by ACRS. Ribbed wire are resistance-weld together with unequal spacing in each directions to form rectangular apertures.

Rectangular Rib Mesh is used when more strength is required in one direction, such as floor slabs and walls stocked in 6m x 2.4m.

Product Code	Description	UOM	Main wire (mm)	Cross wire (mm)	Weight/ sheet (kg)	Bundle QTY
Rectangular Mesh - Standard sheet size 6.0m x 2.4m						
FR0718S	Rib Fabric RL718 Std Sheet	SHT	6.75@100	7.6@100	67.88	30
FR0818S	Rib Fabric RL818 Std Sheet	SHT	7.60@100	7.6@200	79.16	25
FR0918S	Rib Fabric RL918 Std Sheet	SHT	8.60@100	7.6@200	93.35	20
FR1018S	Rib Fabric RL1018 Std Sheet	SHT	9.50@100	7.6@200	109.21	20
FR1118S	Rib Fabric RL1118 Std Sheet	SHT	10.65@100	7.6@200	130.64	15
FR1218S	Rib Fabric RL1218 Std Sheet	SHT	11.90@100	7.6@200	156.71	10



Trench Mesh

Our Trench mesh is manufactured from L-grade ribbed wires (D500L) in compliance with AS/NZS4671:2019, which is long, narrow sheets of concrete reinforcing mesh, ideally sizes for trenches, paths or other narrow spaces. Trench mesh common uses include rock walls, brick walls and house footings and used specifically for residential footing trenches.

Product Code	Description	UOM	Main wire (mm)	Cross wire (mm)	Edgewire (mm)	Weight/ sheet (kg)	Bundle QTY
Square Mesh - Standard sheet size 6.0m x 2.4m							
8TMR200	Rib Trenchmesh L8TM 200mm Wide	SHT	200X6000	7.60@100	4.00@300	6.82	30
8TMR300	Rib Trenchmesh L8TM 300mm Wide	SHT	300X6000	7.60@100	4.00@300	9.16	30
8TMR400	Rib Trenchmesh L8TM 400mm Wide	SHT	400X6000	7.60@100	4.00@300	11.49	30
11TMR200	Rib Trenchmesh L11TM 200mm Wide	SHT	200X6000	10.65@100	4.75@300	18.17	30
11TMR300	Rib Trenchmesh L11TM 300mm Wide	SHT	300X6000	10.65@100	4.75@300	17.65	30
11TMR400	Rib Trenchmesh L11TM 400mm Wide	SHT	400X6000	10.65@100	4.75@300	22.12	30
12TMR200	Rib Trenchmesh L12TM 200mm Wide	SHT	200X6000	11.90@100	4.75@300	16.30	30
12TMR300	Rib Trenchmesh L12TM 300mm Wide	SHT	300X6000	11.90@100	4.75@300	21.82	30
12TMR400	Rib Trenchmesh L12TM 400mm Wide	SHT	400X6000	11.90@100	4.75@300	27.33	30
16TMN200	Trenchmesh N16TM 200mm Wide	SHT	200X600	16.00@100	10.00@300	30.89	N/A
16TMN300	Trenchmesh N16TM 300mm Wide	SHT	200X600	16.00@100	10.00@300	41.43	N/A



Bar Chairs & Spacers

Bar chair and Spacers for concreting provide support for both reinforcing mesh and bar, ensuring that the correct cover of concrete over the reinforcement is achieved. Wire Industries stock a full range of spacers, chairs and supports in different styles and materials including plastic, wire and concrete.



Item No.	Description	Pack Size	Pack Weight (kg)
Wire Bar Chairs [a]			
CW020	Wire Bar Chair 20mm	200 / BAG	3.40
CW025	Wire Bar Chair 25mm	100 / BAG	1.80
CW030	Wire Bar Chair 30mm	100 / BAG	2.00
CW040	Wire Bar Chair 40mm	100 / BAG	2.50
CW050	Wire Bar Chair 50mm	100 / BAG	4.50
CW065	Wire Bar Chair 65mm	100 / BAG	5.50
CW075	Wire Bar Chair 75mm	100 / BAG	6.00
CW080	Wire Bar Chair 80mm	100 / BAG	6.20
CW090	Wire Bar Chair 90mm	100 / BAG	7.00
CW100	Wire Bar Chair 100mm	100 / BAG	7.50
CW110	Wire Bar Chair 110mm	50 / BAG	5.50
CW120	Wire Bar Chair 120mm	50 / BAG	5.75
CW130	Wire Bar Chair 130mm	50 / BAG	6.10
CW140	Wire Bar Chair 140mm	50 / BAG	6.55
CW150	Wire Bar Chair 150mm	50 / BAG	6.50
CW160	Wire Bar Chair 160mm	50 / BAG	7.45
CW170	Wire Bar Chair 170mm	50 / BAG	9.50
CW180	Wire Bar Chair 180mm	25 / BAG	5.03

Item No.	Description	Pack Size	Pack Weight (kg)
CW190	Wire Bar Chair 190mm	25 / BAG	5.30
CW200	Wire Bar Chair 200mm	25 / BAG	5.50
CW210	Wire Bar Chair 210mm	25 / BAG	5.75
CW220	Wire Bar Chair 220mm	25 / BAG	5.98
CW230	Wire Bar Chair 230mm	25 / BAG	6.15
CW240	Wire Bar Chair 240mm	25 / BAG	6.50
CW250	Wire Bar Chair 250mm	25 / BAG	6.80
CW260	Wire Bar Chair 260mm	25 / BAG	7.18
CW270	Wire Bar Chair 270mm	25 / BAG	7.40
CW280	Wire Bar Chair 280mm	25 / BAG	7.58
CW290	Wire Bar Chair 290mm	25 / BAG	7.80
CW300	Wire Bar Chair 300mm	25 / BAG	8.10
CW320	Wire Bar Chair 320mm	25 / BAG	8.63
CW340	Wire Bar Chair 340mm	25 / BAG	9.15
CW360	Wire Bar Chair 360mm	25 / BAG	10.00
CW380	Wire Bar Chair 380mm	25 / BAG	10.75
CW400	Wire Bar Chair 400mm	25 / BAG	11.25
CW420	Wire Bar Chair 420mm	25 / BAG	12.00

Bar Chair Bases [b]

CB152	Bar Chair Base 152mm	100 / BAG	3.90
CB224	Bar Chair Base 224mm	50 / BAG	5.50



Bar Chairs
& Spacers
[cont.]

[c]



[d]



Item No.	Description	Pack Size	Pack Weight (kg)
Slab on Ground Chairs Combination [c]			
CP2540	Plastic Chair SOG 25/40mm Clip On	100 / BAG	2.40
CP5065C	Plastic Chair SOG 50/65mm Clip On	100 / BAG	3.70
CP7590	Plastic Chair SOG 75/90mm Clip On	100 / BAG	4.70
CP85100	Plastic Chair SOG 85/100mm	100 / BAG	5.20
CP105110	Plastic Chair SOG 105/110mm	100 / BAG	7.00
CP115120	Plastic Chair SOG 115/120mm	100 / BAG	7.00
CP125130	Plastic Chair SOG 125/130mm	100 / BAG	7.00
CP135140	Plastic Chair SOG 135/140mm	100 / BAG	10.00
CP145150	Plastic Chair SOG 145/150mm	100 / BAG	10.00
CP155160	Plastic Chair SOG 155/160mm	100 / BAG	8.50
CP165170	Plastic Chair SOG 165/170mm	100 / BAG	9.00

Plastic Bar Chairs [d]			
CPB20	Plastic Chair - Bar 20mm	100 / BAG	3.00
CPB25	Plastic Chair - Bar 25mm	100 / BAG	3.00
CPB30	Plastic Chair - Bar 30mm	100 / BAG	3.00
CPB40	Plastic Chair - Bar 40mm	100 / BAG	3.00
CPB50	Plastic Chair - Bar 50mm	100 / BAG	3.00
CPB65	Plastic Chair - Bar 65mm	100 / BAG	3.00
CPB75	Plastic Chair - Bar 75mm	100 / BAG	3.00

Item No.	Description	Pack Size	Pack Weight (kg)
Plastic Mesh Chairs [e]			
CPM20	Mesh Plastic Chair 20mm	100 / BAG	3.00
CPM25	Mesh Plastic Chair 25mm	100 / BAG	3.00
CPM40	Mesh Plastic Chair 40mm	100 / BAG	3.00
CPM50	Mesh Plastic Chair 50mm	100 / BAG	3.00
CPM65	Mesh Plastic Chair 65mm	100 / BAG	3.00
CPM75	Mesh Plastic Chair 75mm	100 / BAG	3.00

Circular Plastic Chairs [f]			
CPC25	Circular Plastic Chair 25mm	100 / BAG	3.00
CPC30	Circular Plastic Chair 30mm	100 / BAG	3.00
CPC40	Circular Plastic Chair 40mm	100 / BAG	3.00
CPC50	Circular Plastic Chair 50mm	100 / BAG	3.00
CPC65	Circular Plastic Chair 65mm	100 / BAG	4.50
CPC75	Circular Plastic Chair 75mm	100 / BAG	5.00

Plastic Deck Chairs - Bottom Layer [g]			
CPDB020/025	Plastic Deck Chair B 20/25mm	100 / BAG	0.80
CPDB025/030	Plastic Deck Chair B 25/30mm	100 / BAG	1.20
CPDB030/040	Plastic Deck Chair B 30/40mm	100 / BAG	1.40
CPDB035/040	Plastic Deck Chair B 35/40mm	100 / BAG	1.60
CPDB035/045	Plastic Deck Chair B 35/45mm	100 / BAG	1.60
CPDB040/050	Plastic Deck Chair B 40/50mm	100 / BAG	1.80
CPDB045/050	Plastic Deck Chair B 45/50mm	100 / BAG	1.90

[e]



[f]



[g]



[h]



[i]



[j]



[k]



Item No.	Description	Pack Size	Pack Weight (kg)
----------	-------------	-----------	------------------

Plastic Deck Chairs - Top Layer [h]

CPDT065/075	Plastic Deck Chair T 65/75mm	100 / BAG	5.20
CPDT090/100	Plastic Deck Chair T 90/100mm	100 / BAG	6.80
CPDT110/120	Plastic Deck Chair T 110/120mm	100 / BAG	7.30
CPDT130/140	Plastic Deck Chair T 130/140mm	100 / BAG	8.30
CPDT150/160	Plastic Deck Chair T 150/160mm	100 / BAG	8.90
CPDT170/180	Plastic Deck Chair T 170/180mm	100 / BAG	10.10
CPDT190/200	Plastic Deck Chair T 190/200mm	100 / BAG	10.80

Plastic Deck Chair Bases [h]

CPDBASE	Plastic Deck Chair Base	100 / BAG	4.00
---------	-------------------------	-----------	------

Plastic Panel Chairs [i]

CPP30/40C	Panel Chair 30/40 Clipon	100 / BAG	2.00
CPP50/60C	Panel Chair 50/60 Clipon	100 / BAG	2.10
CPP65/75C	Panel Chair 65/75 Clipon	100 / BAG	2.60

Trenchmesh Supports [j]

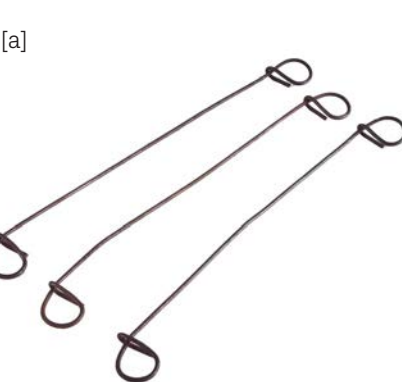
TMS11	Trenchmesh Supports 11 & 12	100 / BAG	5.4
-------	-----------------------------	-----------	-----

Concrete Bar Chairs [k]

CC025	Concrete Chairs 25mm	75 / BAG	11.00
CC030	Concrete Chairs 30mm	75 / BAG	13.33
CC040	Concrete Chairs 40mm	75 / BAG	18.13
CC045	Concrete Chairs 45mm	75 / BAG	20.00
CC050	Concrete Chairs 50mm	75 / BAG	22.40
CC055	Concrete Chairs 55mm	75 / BAG	25.50
CC065	Concrete Chairs 65mm	25 / BAG	13.00
CC075	Concrete Chairs 75mm	25 / BAG	17.00

Tie Wire

[a]



[b]



[c]



Our tie wire range offer different options for you to tie your reinforcing steel. Our bag tie will pair with your preferred twister, the simple pre-cut straight tie wire can use in any situation and our most popular belt pack for your everyday use. Made from strong durable, slightly oiled, anealed steel wire, this wire is perfect for tying off reinforcing and our belt pack fits neatly into the Belt Pack Tie Wire Reel.

Item No.	Description	Wire Size	Pack Size	Pack Weight (kg)
----------	-------------	-----------	-----------	------------------

Bag Ties [a]

BT110	Bag Ties 110mm Black	1.57mm	2000 / BDL	6.30
BT125	Bag Ties 125mm Black	1.57mm	2000 / BDL	6.70
BT150	Bag Ties 150mm Black	1.57mm	2000 / BDL	7.50
BT200	Bag Ties 200mm Black	1.57mm	2000 / BDL	9.00

Belt Packs [b]

TWBP	Tie Wire Belt Pack	1.57mm	EACH	1.50
TWBPG	Tie Wire Belt Pack Galv	1.57mm	EACH	1.50

Straight Cut Tie Wire [c]

TWSL28	Tie Wire Dia 280mm	1.25mm		3.00
TWSL35	Tie Wire Dia 350mm	1.25mm		3.00



Trench Mesh Fitment

We can supply a full range of ligatures (fitments) manufactured from round reinforcing bar, grade R250N, to suit all requirements. Commonly used to separate top and bottom layers of Trench Mesh in residential slabs or for fabricating beam or column cages. Common square and rectangular shapes in 6mm and 10mm bar are listed below. We can manufacture other shapes and sizes to order. All our ligatures meet AS/NZS 4671.

[a]



Item No.	Description	Pack Size	Pack Weight (kg)
Ligatures [a]			
L101520	R10 Ligature 150mm x 200mm	10 / BDL	6.67
L101530	R10 Ligature 150mm x 300mm	10 / BDL	7.95
L102020	R10 Ligature 200mm x 200mm	10 / BDL	7.31
L102030	R10 Ligature 200mm x 300mm	10 / BDL	8.59
L102040	R10 Ligature 200mm x 400mm	10 / BDL	9.87
L102045	R10 Ligature 200mm x 450mm	10 / BDL	10.51
L102050	R10 Ligature 200mm x 500mm	10 / BDL	11.15
L102520	R10 Ligature 250mm x 200mm	10 / BDL	7.95
L102525	R10 Ligature 250mm x 250mm	10 / BDL	8.59
L102530	R10 Ligature 250mm x 300mm	10 / BDL	9.23
L102540	R10 Ligature 250mm x 400mm	10 / BDL	10.51
L103030	R10 Ligature 300mm x 300mm	10 / BDL	9.87
L103035	R10 Ligature 300mm x 350mm	10 / BDL	10.51
L103040	R10 Ligature 300mm x 400mm	10 / BDL	11.15
L103045	R10 Ligature 300mm x 450mm	10 / BDL	11.79
L103050	R10 Ligature 300mm x 500mm	10 / BDL	12.44
L103520	R10 Ligature 350mm x 200mm	10 / BDL	9.23
L104040	R10 Ligature 400mm x 400mm	10 / BDL	12.44
L104045	R10 Ligature 400mm x 450mm	10 / BDL	13.08

Item No.	Description	Pack Size	Pack Weight (kg)
Z Bars [b]			
Z10150	Z Bars R10 200 × 150 × 300mm	25 / BDL	3.79
Z10200	Z Bars R10 200 × 200 × 300mm	25 / BDL	4.11
Z10250	Z Bars R10 200 × 250 × 300mm	25 / BDL	4.42
Z10300	Z Bars R10 200 × 300 × 300mm	25 / BDL	4.74
Z10350	Z Bars R10 200 × 350 × 300mm	25 / BDL	5.06
Z10400	Z Bars R10 200 × 400 × 300mm	25 / BDL	5.37
Z10450	Z Bars R10 200 × 450 × 300mm	25 / BDL	5.69
Z10500	Z Bars R10 200 × 500 × 300mm	25 / BDL	6.00
Z10550	Z Bars R10 200 × 550 × 300mm	25 / BDL	6.32
Z10600	Z Bars R10 200 × 600 × 300mm	25 / BDL	6.64

Z Cages [c]			
ZC7	Z CAGE - 3×11mm T&B 300×200	EACH	27.82
ZC8	Z CAGE - 3×11mm T&B 400×200	EACH	28.2
ZC9	Z CAGE - 3×12mm T&B 300×200	EACH	34.08
ZC10	Z CAGE - 3×12mm T&B 400×200	EACH	34.46

[b]



[c]



Dowel Bars & Dowel Accessories

Dowels are used in concrete joint to control and prevent the cracking within the concrete slab and to form contraction joints in concrete slabs. We supply dowels as well as a range of related accessories including dowel cradles, covers, sleeves, expansion caps and dowelserts.

[a]



[b]



Item No.	Description	Pack Size	Pack Weight (kg)
Round Black (with sawn ends) [a]			
DB1245	Dowel 12mm Dia 450mm Long	25 / BDL	9.98
DB1640	Dowel 16mm Dia 400mm Long	25 / BDL	15.78
DB1660	Dowel 16mm Dia 600mm Long	25 / BDL	23.68
DB2040	Dowel 20mm Dia 400mm Long	20 / BDL	19.73
DB2060	Dowel 20mm Dia 600mm Long	20 / BDL	29.59

Round Galvanized (with sawn ends) [a]			
DG1245	Dowel Galv 12mm Dia 450mm Long	50 / BDL	20.48
DG1640	Dowel Galv 16mm Dia 400mm Long	25 / BDL	16.18
DG1660	Dowel Galv 16mm Dia 600mm Long	25 / BDL	24.27
DG2040	Dowel Galv 20mm Dia 400mm Long	20 / BDL	20.22
DG2060	Dowel Galv 20mm Dia 600mm Long	20 / BDL	30.33
DG2445	Dowel Galv 24mm Dia 450mm Long	20 / BDL	32.76
DG2460	Dowel Galv 24mm Dia 600mm Long	20 / BDL	43.68
DG3345	Dowel Galv 33mm Dia 450mm Long	10 / BDL	30.97
DG3645	Dowel Galv 36mm Dia 450mm Long	EACH	3.69

Square Black (with sawn ends) [b]			
DSB1640	Dowel Square 16mm 400mm	20 / BDL	16.07
DSB2040	Dowel Square 20mm 400mm	20 / BDL	25.12

Square Galvanized (with sawn ends) [b]			
DSG1640	Dowel Square Galv 16mm 400mm	20 / BDL	16.48
DSG2040	Dowel Square Galv 20mm 400mm	20 / BDL	25.75

Item No.	Description	Pack Size	Pack Weight (kg)
Diamond Dowels Black (trade packs - generally loose) [c]			
DDB06	Diamond Dowel Black 6mm	25 / T/PACK	15.00
DDB10	Diamond Dowel Black 10mm	15 / T/PACK	16.50

Diamond Dowels Galvanized (trade packs - generally loose) [c]			
DDG06	Diamond Dowel Galv 6mm	25 / T/PACK	15.00
DDG10	Diamond Dowel Galv 10mm	15 / T/PACK	16.50

Dowel Cradles [d]			
DCPB063045	Dowel Cradle Black Plate 6@450	EACH	9.08
DCPB103045	Dowel Cradle Black Plate 10@450	EACH	12.46
DCPD3B063045	Dowel Cradle Black PD3 6@450	EACH	9.08
DCPD3B103045	Dowel Cradle Black PD3 10@450	EACH	12.46
DCPG063045	Dowel Cradle Galv Plate 6@450	EACH	9.08
DCPG103045	Dowel Cradle Galv Plate 10@450	EACH	12.16

Threaded Dowels [e]			
TB12600	N12 Bar 600mm Long 50mm Thrd	50 / BDL	27.50
TB161000	N16 Bar 1000mm Long 50mm Thrd	50 / BDL	82.16
TB16600	N16 Bar 600mm Long 50mm Thrd	25 / BDL	24.25
TB201000	N20 Bar 1000mm Long 50mm Thrd	25 / BDL	63.20
TB20600	N20 Bar 600mm Long 50mm Thrd	50 / BDL	76.00
TB241000	N24 Bar1000mm Long 50mm Thrd	25 / BDL	91.00

Dowel Caps [f]			
DC16	Dowel Cap 16mm & 20mm	100 / BAG	2.00
DC24	Dowel Cap 24mm	100 / BAG	2.00

[c]



[d]

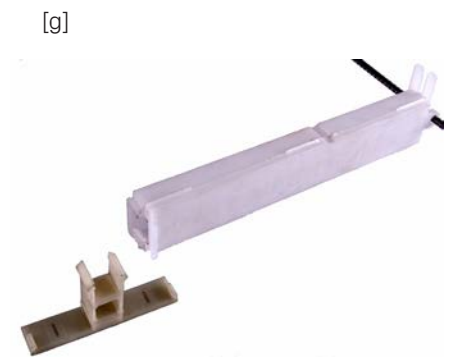


[e]



[f]





[g]



[h]



[i]



[j]

Item No.	Description	Pack Size	Pack Weight (kg)
Dowelmaster [g]			
DM16	Dowelmaster 16mm	100 / BDL	9.40
DM20	Dowelmaster 20mm	100 / BDL	9.40
DMNP16	Dowelmaster Nail Plate 16mm	100 / BDL	7.00
DMNP20	Dowelmaster Nail Plate 20mm	100 / BDL	7.00

Uni Dowel Sleeve Round [h]			
DSUR12150	Uni Dowel Sleeve R12 150mm	9 / BDL	0.07
DSUR16230	Uni Dowel Sleeve R16 230mm	25 / BDL	0.08
DSUR16300	Uni Dowel Sleeve R16 300mm	25 / BDL	0.08
DSUR20230	Uni Dowel Sleeve R20 230mm	25 / BDL	0.08
DSUR20300	Uni Dowel Sleeve R20 300mm	25 / BDL	0.08
DSUR24230	Uni Dowel Sleeve R24 230mm	25 / BDL	0.09
DSUR33250	Uni Dowel Sleeve R33 250mm	SINGLES	0.11

Uni Dowel Sleeve Square [i]			
DSUS16230	Uni Dowel Sleeve S16 230mm	25	0.10
DSUS16300	Uni Dowel Sleeve S16 300mm	25	0.10
DSUS20230	Uni Dowel Sleeve S20 230mm	25	0.12
DSUS20300	Uni Dowel Sleeve S20 300mm	25	0.12

Speed Sleeves [j]			
DSS16240	Speed Sleeve 16mm 240mm	100 / BDL	6.6
DSS16310	Speed Sleeve 16mm 310mm	100 / BDL	8.5
DSS20240	Speed Sleeve 20mm 240mm	100 / BDL	11.1
DSS20310	Speed Sleeve 20mm 310mm	100 / BDL	12.2
DSSNP16	Speed Sleeve Nail Plate 16mm	100 / BDL	2.5
DSSNP20	Speed Sleeve Nail Plate 20mm	100 / BDL	2.5



[a]



[b]



[c]

Polythene Film

Polythene film is a high quality heavy duty LDPE film that can be used for a variety of purposes and most often used as a moisture barrier and concrete underlay. To ensure integrity of the waterproofing for the concrete slab all lapped joints can be sealed with duct tape. It can also use for temporary weather protection or screening areas on job site.

Item No.	Description	Pack Size	Pack Weight (kg)
Black [a]			
PB12	Polythene Film Black 200um 50m x 2m	50m ROLL	18.46
PB24	Polythene Film Black 200um 50m x 4m	50m ROLL	36.9

Orange [b]			
PO24	Polythene Film Orange 200um 50m x 4m	50m ROLL	36.9
PO34	Polythene Film Orange 300um 25m x 4m	25m ROLL	27.69

Duct Tape [c]			
PTR	Duct Tape 48mm x 30m	30m ROLL	0.29



Joint Filler & Joint Formers

Flexible Expansion Jointing is used in all standard concrete constructions such as driveways, footpaths and floor slabs. The jointing assist in preventing cracks and breakages in slabs, which are often caused by the expansion and contraction of concrete due to changes in climatic conditions. Concrete joining products work to allow controlled movement in concrete slab joints, to control and prevent the cracking within the concrete slab and to form contraction joints in concrete slabs.

[a]



[b]



[c]



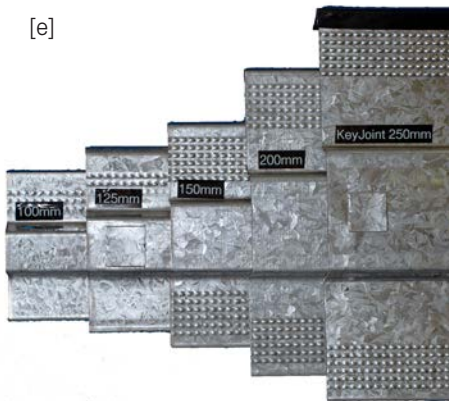
[c]



[d]



[e]



[f]



Item No.	Description	Pack Size	Pack Weight (kg)
----------	-------------	-----------	------------------

Crack Inducers [c]

CIG50	Crack Inducer Ground 50mm x 3m	3m / LGTH	0.93
CIG25	Crack Inducer Ground 25mm x 3m	3m / LGTH	0.36
CJP25	Crack Inducer 25mm Plain 3m Long	3m / LGTH	1.20
CJR25	Crack Inducer 25mm t/off 3m Long	3m / LGTH	1.20

Expansion Joint (Includes 4 pegs & wedges per length) [d]

EXJ1003000	Expansion Joint 100mm Slab 3m	3m / LGTH	2.64
EXJ1253000	Expansion Joint 125mm Slab 3m	3m / LGTH	3.74
EXJ1503000	Expansion Joint 150mm Slab 3m	3m / LGTH	4.13
EXJ2003000	Expansion Joint 200mm Slab 3m	3m / LGTH	5.16

Key Joint (Include stakes) [e]

KJ1003000	Key Joint 100mm Slab 3m Long	3m / LGTH	1.80
KJ1006000	Key Joint 100mm Slab 6m Long	6m / LGTH	6.25
KJ1253000	Key Joint 125mm Slab 3m Long	3m / LGTH	3.42
KJ1256000	Key Joint 125mm Slab 6m Long	6m / LGTH	6.85
KJ1503000	Key Joint 150mm Slab 3m Long	3m / LGTH	2.40
KJ1506000	Key Joint 150mm Slab 6m Long	6m / LGTH	8.20
KJ2003000	Key Joint 200mm Slab 3m Long	3m / LGTH	3.40

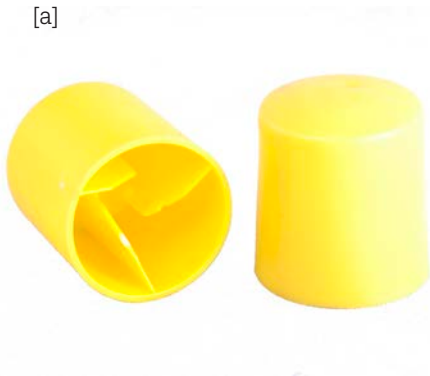
Key Joint Capping (25m rolls) [f]

KJCP	Key Joint Capping Permanent	25m ROLL	0.07
KJCPC	Key Joint Capping Perm Connolly	25m ROLL	0.07
KJCR	Key Joint Capping Removable STD	25m ROLL	0.03
KJCRB	Key Joint Capping Removable Block	25m ROLL	0.03
KJCRC	Key Joint Capping Rem Connolly	25m ROLL	0.03

Safety Caps

Safety Reo Caps provide protection when placed on an exposed ends of reinforcing bars and star pickets. We have both bar guards and the Danley Reosok available.

[a]



[b]



Item No.	Description	Pack Size	Pack Weight (kg)
Bar Guards [a]			
BG	Bar Guards	100 / BAG	3.0
Reo Soks [b]			
RS1220	Reo Sok 12-20mm	50 / BAG	1.50
RS2432	Reo Sok 24-36mm	50 / BAG	1.50

Couplers

Bar Couplers are designed to produce a full strength mechanical joint between reinforcing bars, replacing the need for lap splices.

[a]



[b]



Item No.	Description	Pack Size	Pack Weight (kg)
BT Couplers [a]			
BTC12	Bartec Coupler 12mm	EACH	0.04
BTC16	Bartec Coupler 16mm	EACH	0.09
BTC20	Bartec Coupler 20mm	EACH	0.16
BTC24	Bartec Coupler 24mm	EACH	0.32
BTC28	Bartec Coupler 28mm	EACH	0.43
BTC32	Bartec Coupler 32mm	EACH	0.58
BTC36	Bartec Coupler 36mm	EACH	0.87
BTC40	Bartec Coupler 40mm	EACH	1.13
BTC50	Bartec Coupler 50mm	EACH	2.17
BT Threading [b]			
BTTHRD12	Bartec Single Thread 12mm	EACH	
BTTHRD16	Bartec Single Thread 16mm	EACH	
BTTHRD20	Bartec Single Thread 20mm	EACH	
BTTHRD24	Bartec Single Thread 24mm	EACH	
BTTHRD28	Bartec Single Thread 28mm	EACH	
BTTHRD32	Bartec Single Thread 32mm	EACH	
BTTHRD36	Bartec Single Thread 36mm	EACH	
BTTHRD40	Bartec Single Thread 40mm	EACH	
BTTHRD50	Bartec Single Thread 50mm	EACH	

Couplers
[cont.]

[c]



[d]



[e]



Item No.	Description	Pack Size	Pack Weight (kg)
----------	-------------	-----------	------------------

Lenton Couplers [c]

EL12A12N	A12 Std Coupler Plain 12mm	EACH	0.060
EL16A12N	A12 Std Coupler Plain 16mm	EACH	0.130
EL20A12N	A12 Std Coupler Plain 20mm	EACH	0.270
EL24A12N	A12 Std Coupler Plain 24mm	EACH	0.440
EL28A12N	A12 Std Coupler Plain 28mm	EACH	0.610
EL32A12N	A12 Std Coupler Plain 32mm	EACH	0.790
EL36A12N	A12 Std Coupler Plain 36mm	EACH	1.080
EL40A12N	A12 Std Coupler Plain 40mm	EACH	1.400

Lenton Terminator [d]

EL12D14N	D14 Mech Anchor Plain 12mm	EACH	0.21
EL16D14N	D14 Mech Anchor Plain 16mm	EACH	0.41
EL20D14N	D14 Mech Anchor Plain 20mm	EACH	0.83
EL24D14N	D14 Mech Anchor Plain 24mm	EACH	1.43
EL28D14N	D14 Mech Anchor Plain 28mm	EACH	1.76
EL32D14N	D14 Mech Anchor Plain 32mm	EACH	2.12
EL36D14N	D14 Mech Anchor Plain 36mm	EACH	2.83

Lenton Position coupler [e]

EL12P13LN	P13 Position Coupler Plain 12mm	EACH	0.36
EL16P13LN	P13 Position Coupler Plain 16mm	EACH	0.59
EL20P13LN	P13 Position Coupler Plain 20mm	EACH	1.09
EL24P13LN	P13 Position Coupler Plain 24mm	EACH	1.94
EL28P13LN	P13 Position Coupler Plain 28mm	EACH	2.53
EL32P13LN	P13 Position Coupler Plain 32mm	EACH	3.96
EL36P13LN	P13 Position Coupler Plain 36mm	EACH	5.01

[f]



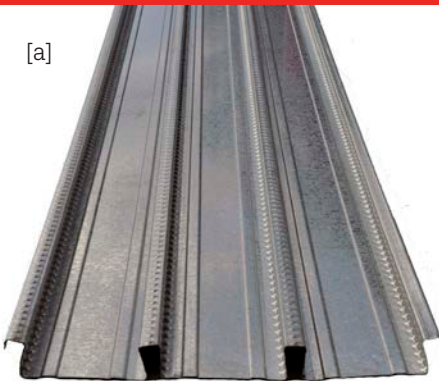
Item No.	Description	Pack Size	Pack Weight (kg)
----------	-------------	-----------	------------------

Lenton Thread [f]

ELTHREAD12	N12 Lenton Tapered Thread	EACH	
ELTHREAD16	N16 Lenton Tapered Thread	EACH	
ELTHREAD20	N20 Lenton Tapered Thread	EACH	
ELTHREAD24	N24 Lenton Tapered Thread	EACH	
ELTHREAD28	N28 Lenton Tapered Thread	EACH	
ELTHREAD32	N32 Lenton Tapered Thread	EACH	
ELTHREAD36	N36 Lenton Tapered Thread	EACH	
ELTHREAD40	N40 Lenton Tapered Thread	EACH	

Structural
Decking

[a]



Item No.	Description	Pack Size	Pack Weight (kg)
----------	-------------	-----------	------------------

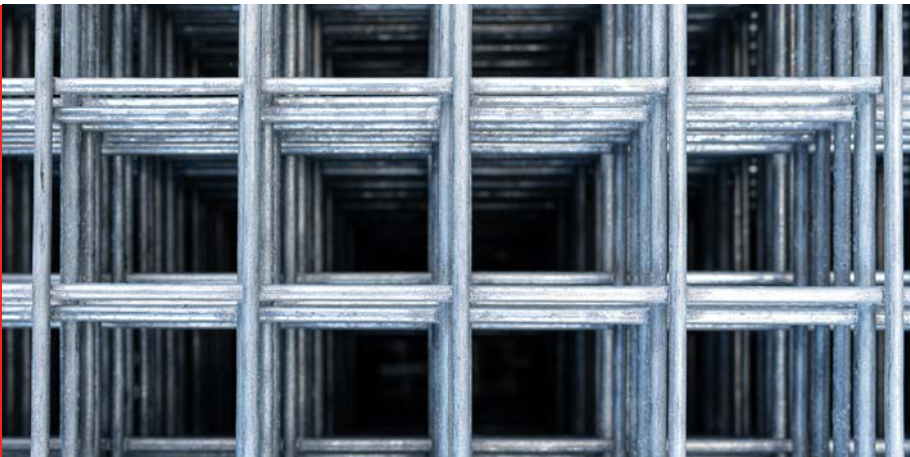
Reflor [a]

KF55060	ReFlor RF55 0.60mm 600mm wide	SQM	8.52
KF55075	ReFlor RF55 0.75mm 600mm wide	SQM	10.5
KF55100	ReFlor RF55 1.00mm 600mm wide	SQM	13.79

Kingflor

KF57075	KingFlor 57 0.75mm 300mm wide	SQM	9.66
KF57100	KingFlor 57 1.00mm 300mm wide	SQM	13.3
KF70060	KingFlor 70 0.60mm 600mm wide	SQM	7.15
KF70075	KingFlor 70 0.75mm 600mm wide	SQM	8.82
KF70100	KingFlor 70 1.00mm 600mm wide	SQM	11.69

Galvanised Industrial Weldmesh



Our all-purpose galvanised weldmesh come in standard size 2.4mx 1.2m, is easy to use and ideal for an array of DIY applications including climbing plant trainers in the garden, creating garden partitions, building aviaries and animal enclosures, safety screening, shelving and racking, window guards, tree guards and drainage grates.

Item No.	Description	Pack Size	Pack Weight (kg)
Galvanised Industrial Weldmesh			
WG2A11	Galv Mesh 2.5mm Dia 25mmx25mm	SHT	22.6
WG2A13	Galv Mesh 2.5mm Dia 25mmx75mm	SHT	15
WG322	Galv Mesh 3.15mm Dia 50mmx50mm	SHT	18
WG422	Galv Mesh 4mm Dia 50mm x 50mm	SHT	29.0
WG423	Galv Mesh 4mm Dia 50mm x 75mm	SHT	24.0
WG523	Galv Mesh 5mm Dia 50mm x 75mm	SHT	37.5
WG544	Galv Mesh 5mm Dia 100mmx100mm	SHT	23.1

Void Formers – Pods



Pods or void Formers are used in on ground concrete slabs to reduce the volume of concrete whilst maintaining the overall strength of the slab. We provide both the pods and the spacers used between them.

Void Formers – Pods

P150	Waffle Pod 150mm	EACH	1.9
P175	Waffle Pod 175mm	EACH	2.0
P225	Waffle Pod 225mm	EACH	3.0
P300	Waffle Pod 300mm	EACH	3.0
P375	Waffle Pod 375mm	EACH	8.5

Non standard charges

* Please refer to our shape code list for standard and complex bending
^ Electronic copies of marking plans or delivery documents are free
Wire Industries allow 1 hour to unload a rigid truck and 2 hours for semi-trailer

Description	UOM	Unit price
Complex Manufacturing		
Complex Bending (>4 bends and 1 plan)*	TONNE	\$300
Radius Bending	TONNE	\$300
3D Bending	TONNE	\$300
High Tolerance Processing	TONNE	\$150
Small Diameter Processing (<12mm)	TONNE	\$150
Mill Surcharges		
10mm	TONNE	\$40
32mm	TONNE	\$20
36mm	TONNE	\$60
40mm	TONNE	\$100
Round Bar	TONNE	\$200
>12 Metres	TONNE	\$100
Administrative Charge		
Resupply marking plan (hard copy)^	EACH	\$6
Resupply delivery documents (hard copy)^	EACH	\$25
Progress payment (consolidated invoicing)	PER MONTH	\$800
Logistic Surcharges#		
Return load	TONNE	\$100
Delivery using customer's crane unload	TONNE	\$50 (Min. \$250)
Delivery using Wire Industries crane unload	TONNE	\$75 (Min. \$350)
Demurrage	HOURL	\$150
Urgent delivery (within 24 hours)	DROP	\$150
Preslinging of product	TONNE	\$25
Steel bin - replacement	EACH	\$2,500
Steel bin - rubbish to be empty	EACH	\$500
Steel bin - late return	DAY	\$200
Project Related Surcharges		
Estimating fee	TONNE	\$10
Detailing fee (drawing not to AS/NZS1100.501:2002)	HOURL	\$120
Scheduling fee	TONNE	\$70
Scheduling fee (within 72 hours delivery)	TONNE	\$70
Rescheduling fee	HOURL	\$90
BIM modelling	TONNE	\$90

“Wire Industries has grown to become one of Australia’s leading suppliers of reinforcing steel products and services.”



Brisbane

126 Main Beach Road
Pinkenba QLD 4008
t 07 3622 6888
e Brisbane@wireind.com.au

Sydney

182 Power Street
Glendenning NSW 2761
t 02 8887 7777
e Sydney@wireind.com.au



Melbourne

20 Permas Way
Truganina VIC 3029
t 03 8348 9888
e Melbourne@wireind.com.au

Product details are correct at time of publishing and are subject to change due to unforeseen circumstances. Please contact your Wire Industries representative directly for product availability for your location. Wire Industries reserve the right to correct any errors. Wire Industries Pty Ltd. ABN 44 055 064 125.


WIRE INDUSTRIES
wireind.com.au

